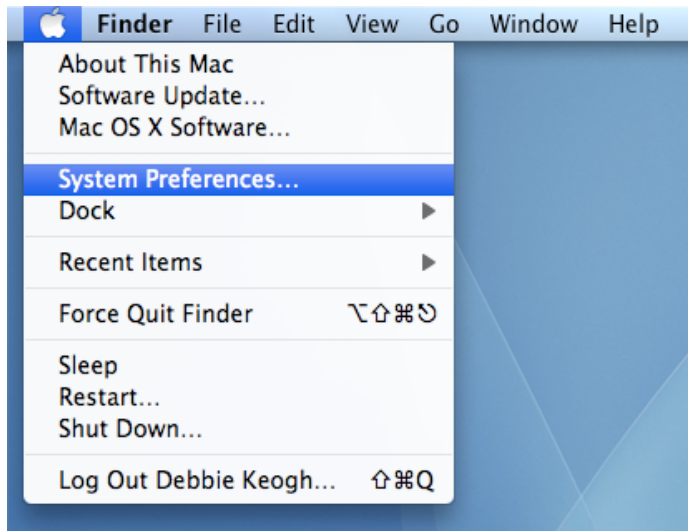


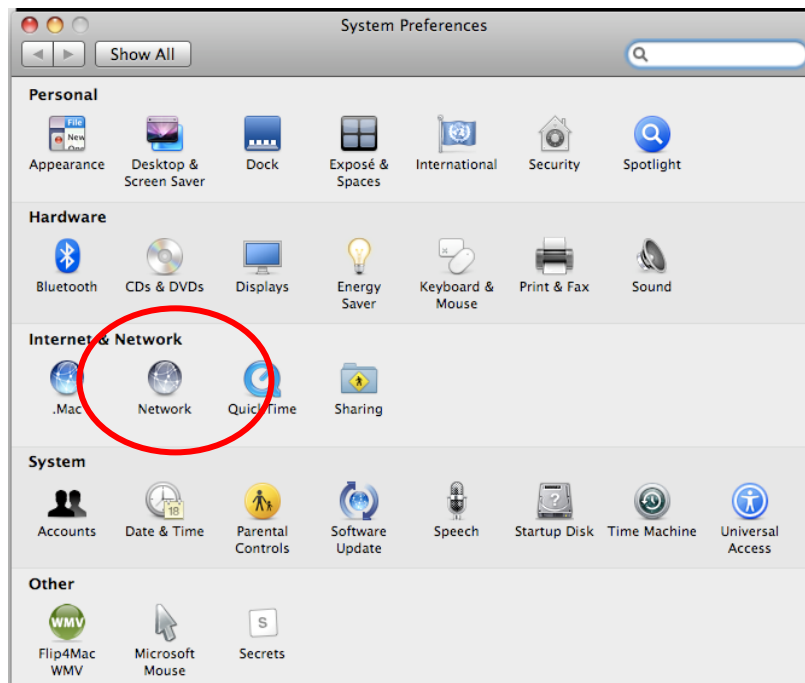
Configuring your proxy settings – MAC OSX 10.5 (Leopard)

Safari

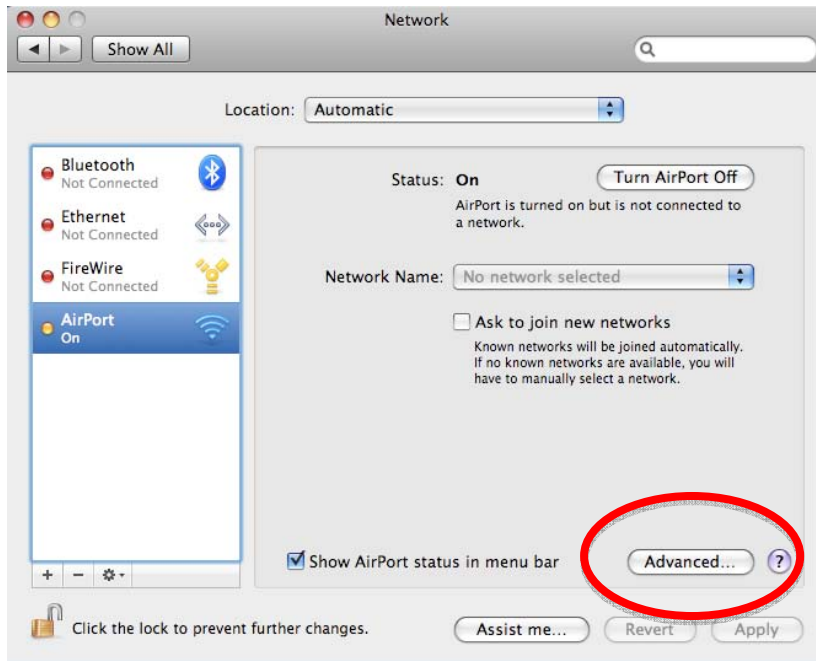
From the **Apple** menu select **System Preferences**



Click on the **Network** icon



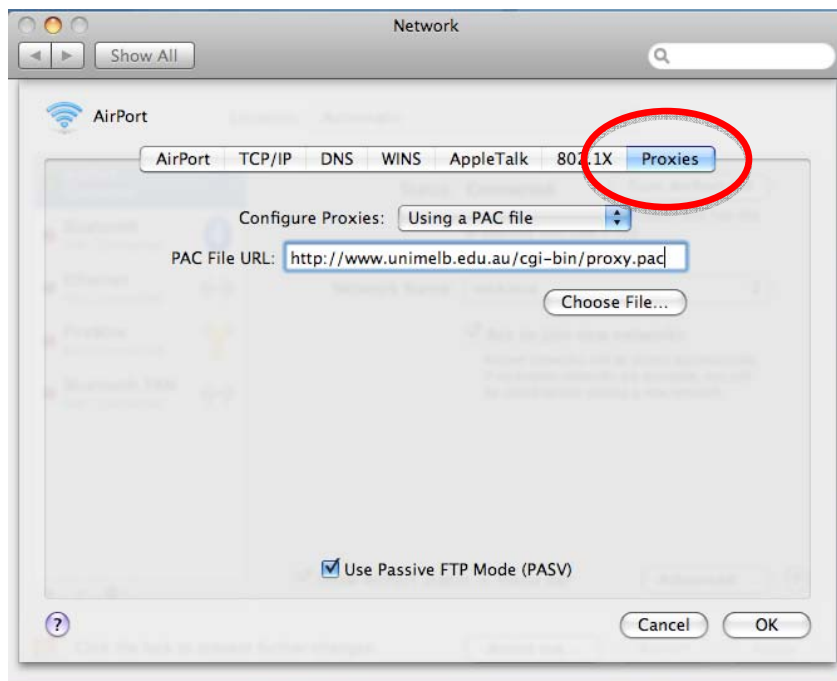
Select **Airport** from the left hand side and click on the **Advance** button



Select the Proxies tab

Select **Using a PAC file** from the **Configure Proxies** drop down box

In the **PAC File URL** field type <http://www.unimelb.edu.au/cgi-bin/proxy.pac>



Click **OK** to exit proxy settings

Click **Apply** to save changes

Close System Preferences

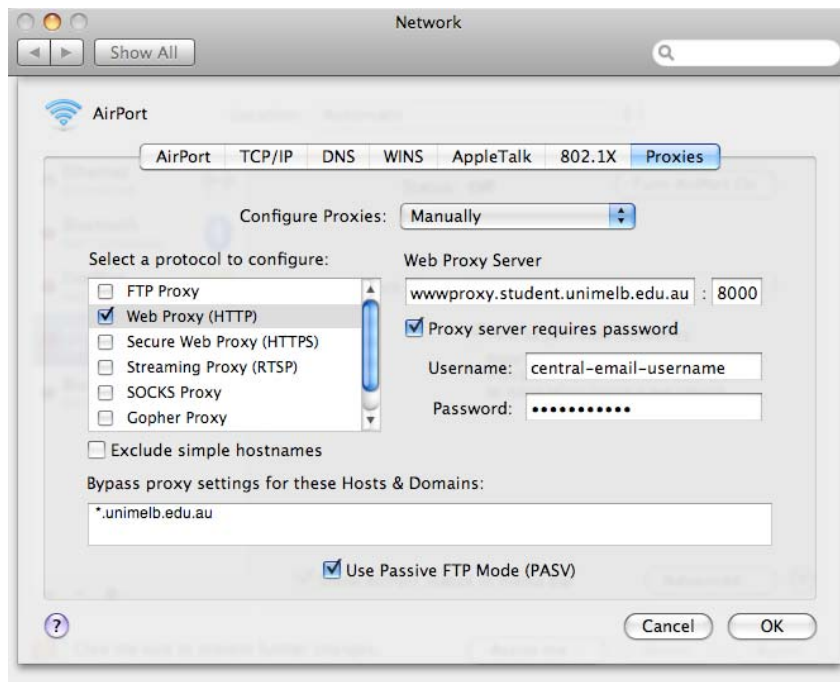
If you would prefer to use the manual proxy:

From the **Configure Proxies** drop down box select **Manually**

From the **Select a protocol to configure** list check **Web Proxy (HTTP)**

In the **Web Proxy Server** field enter: **wwwproxy.student.unimelb.edu.au : 8000**

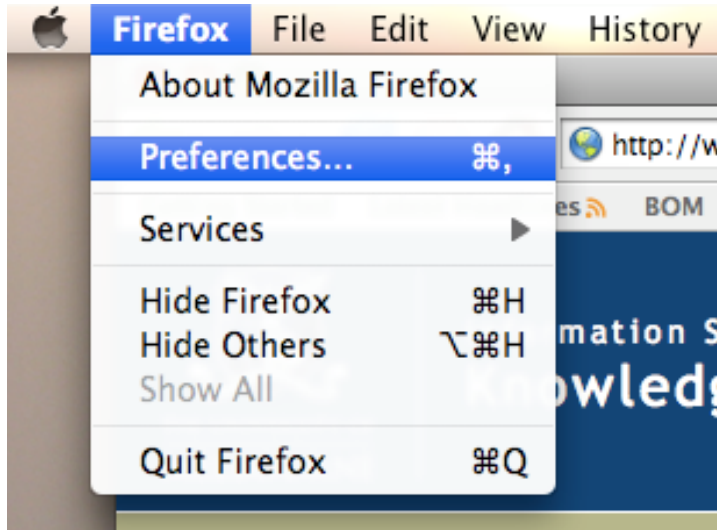
In the **Bypass proxy settings for these Hosts & Domains** field enter: ***.unimelb.edu.au**



Click **OK** to exit the proxy setting, and close **System Preferences**

Firefox

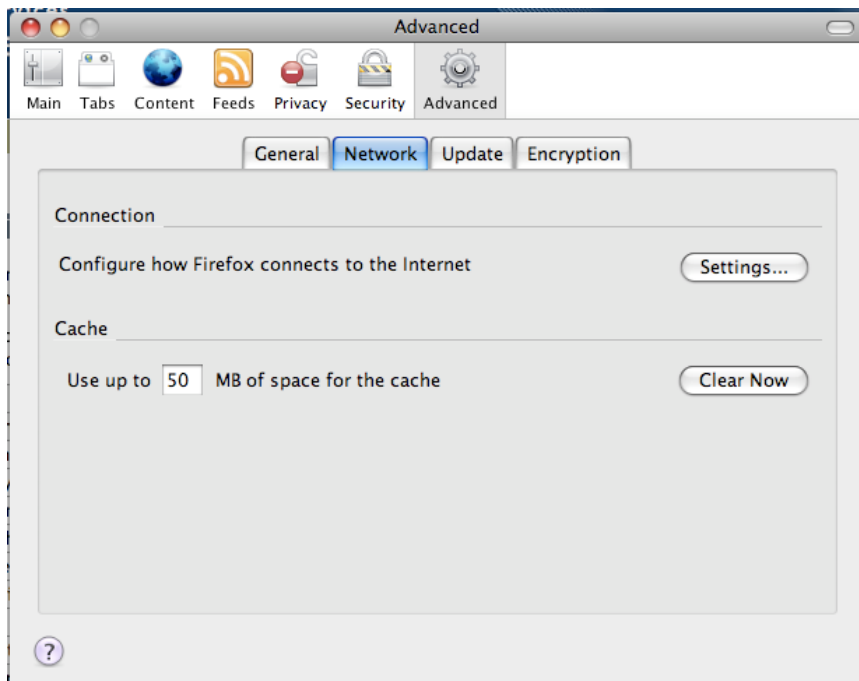
From the **Firefox** menu select **Preferences**



Select the **Advanced** icon

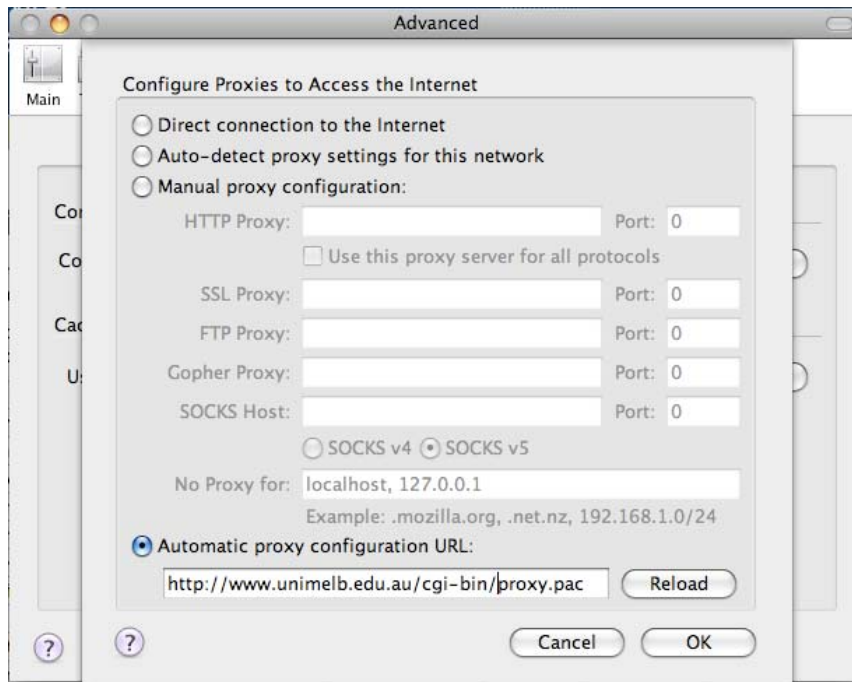
Select the **Network** tab

Click on the **Settings** button



Select the **Automatic proxy configuration URL**: radio button

Enter: <http://www.unimelb.edu.au/cgi-bin/proxy.pac>



Click **OK** to exit the proxy setting, and close **Preferences**

If you wish to manually configure you browser:

Select the **Manual proxy configuration** radio button

HTTP Proxy: **wwwproxy.student.unimelb.edu.au**

Port: **8000**